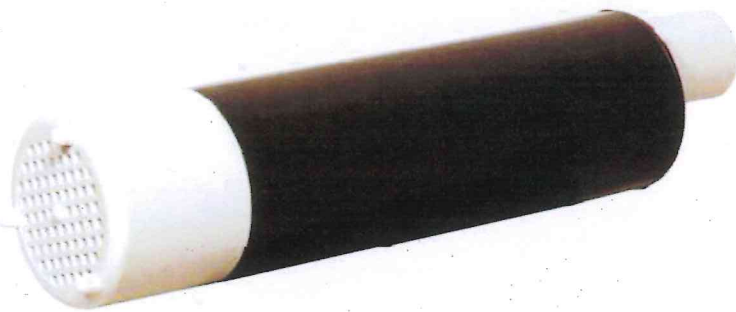


- ◆ Diesel refuelling
- ◆ Container filling/emptying
- ◆ Wash down for car, caravan & boat
- ◆ Spraying/garden watering

LVM-111 12 volt pump

LVM-112 24 volt pump

Shown with filter  
attached



**FLOW RATE:**

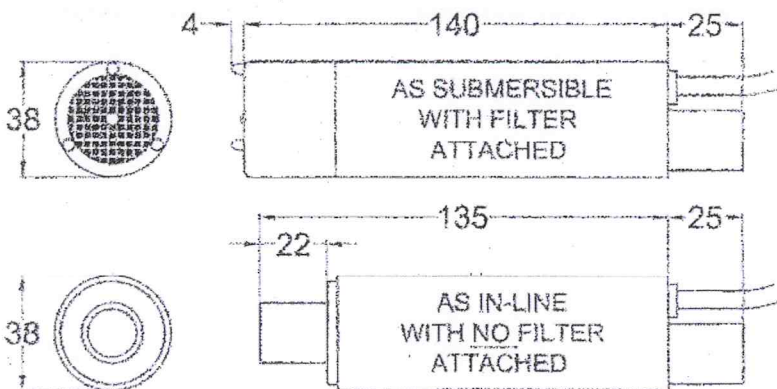
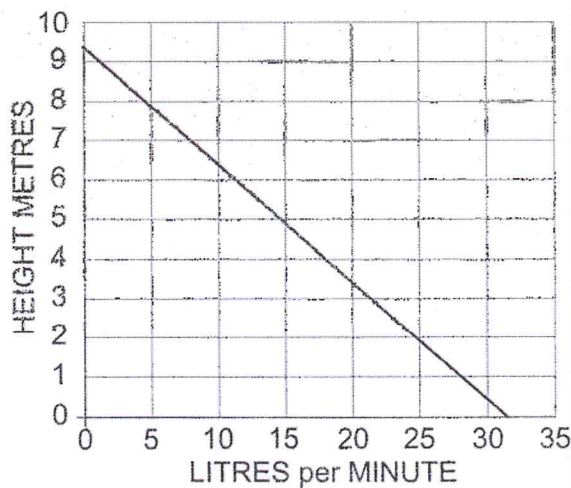
Flow rate and current reduces as the height to be pumped increases

**RECOMMENDED FUSE SIZE:**

12 volt – 6 amp  
24 volt – 3 amp

**WEIGHT:** 0.57kg

**CONNECTIONS:** for 19mm (3/4") bore hose



**CONGO**  
**SUBMERSIBLE & IN-LINE**  
**DIESEL**  
*or*  
**WATER**  
**TRANSFER**  
**PUMP**

12 and 24 volt d.c.

- ◆ Up to 32 litres (7 gallons) per minute
- ◆ Suitable for diesel fuel, water, seawater
- ◆ Temperatures up to 80°C
- ◆ Complete with 4m cable and crocodile clips
- ◆ Continuously rated



Not suitable for pumping petrol, light hydrocarbons, non-aqueous solvents

Doc 478/09